



# Embrace Families

Building Stronger Communities

**Assisting Families with Children who have  
Developmental Disabilities through Diversion  
Services**

**Gerry Glenn, Amanda Johnson, & Vanessa Monn**

# Families in Need of Support



# Who is The Agency for Persons with Disabilities?

The Agency for Persons with Disabilities (APD) is Florida's state agency specifically tasked with serving the needs of Floridians with developmental disabilities, defined in statute as:

- Intellectual Disabilities (Full Scale IQ of 70 or below)
- Severe forms of Autism
- Spina Bifida Cystica or Myelomeningocele
- Cerebral Palsy
- Prader-Willi Syndrome
- Down Syndrome
- Phelan-McDermid Syndrome



All Floridians with Developmental Disabilities are eligible to apply for the HCBS Waiver.

Authorized under section 1915(c) of the Social Security Act and governed by Title 42, Code of Federal Regulations (CFR), Parts 440 and 441.

Provides home and community-based supports and services to eligible persons with developmental disabilities (DD) living at home or in a home-like setting.

Funded by both federal and matching state dollars.

## **The Florida Medicaid Developmental Disabilities Individual Budgeting (iBudget) Home and Community-Based services (HCBS) waiver**



# Applying for the iBudget HCBS WAIVER

## 1. Apply

- Send initial application for services to APD with the required documentation
- Receive confirmation you are accepted and placed on the waitlist for services
- It is important to be on the waitlist (become a customer of APD)

## 2. Crisis

- Currently homeless
- Exhibit life-threatening behaviors that place them or others in extreme danger
- Caregiver who is in extreme duress and can no longer provide for the applicant's health and safety

## 3. Enroll

- Medicaid Application
- QSI assessment
- Budget Calculation
- Waiver Support Coordinator choice

## Purpose of iBudget HCBS Waiver

Offers supports and services to assist individuals with developmental disabilities to live in their communities



# Services on iBudget

All services are based on need, living setting and age.

The waiver is payee of last resort.



# Services on iBudget

- Personal Supports and Respite
- Supplies and Equipment
- Life Skills and Meaningful Day
- Therapeutic and Wellness
  - ABA
  - Speech
  - PT/OT
  - Nursing Counseling
- Residential Services
- Waiver Support Coordination



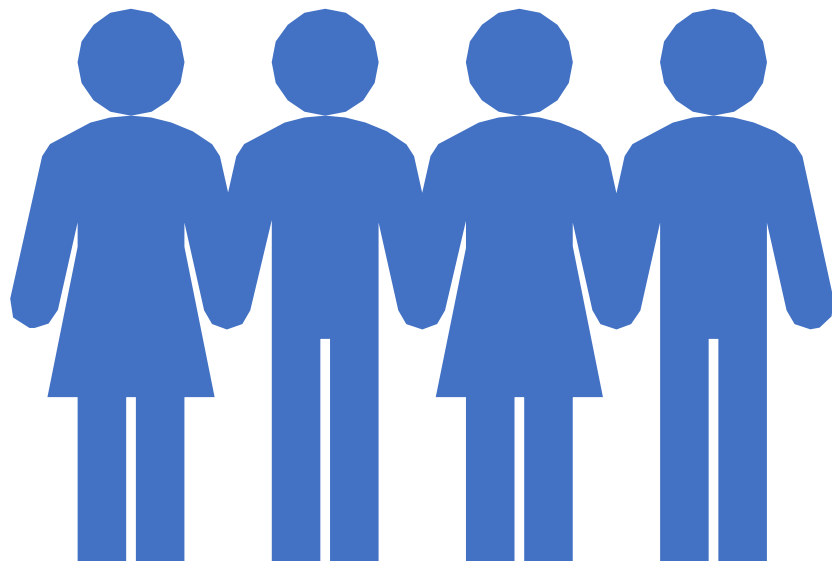


# Waiver Support Coordination

The service of advocating for the recipient.



# Waiver Support Coordinator



Using a person-centered approach, the Waiver Support Coordinator (WSC) facilitates the individual to:

- **Identify their personal goals**
- **Develop a system of support to help reach those goals**
- **Coordinate supports and services**
- **Access supports and services REGARDLESS of funding source**
- **Ensures the Waiver is the payee of last resort**

# Waiver Support Coordinators Coordinate All Supports

- Family, friends, and systems of support
- Vocational Programs
- School Districts
- Community Programs
- Medicaid
- Private Insurance
- Faith Communities
- Non-profit Services
- Generic resources through other state, federal, and local government and community programs



# Waiver Support Coordinator

Waiver Support Coordinators are guides and advocates.

A waiver support coordinator is not available until the individual is eligible for waiver services.

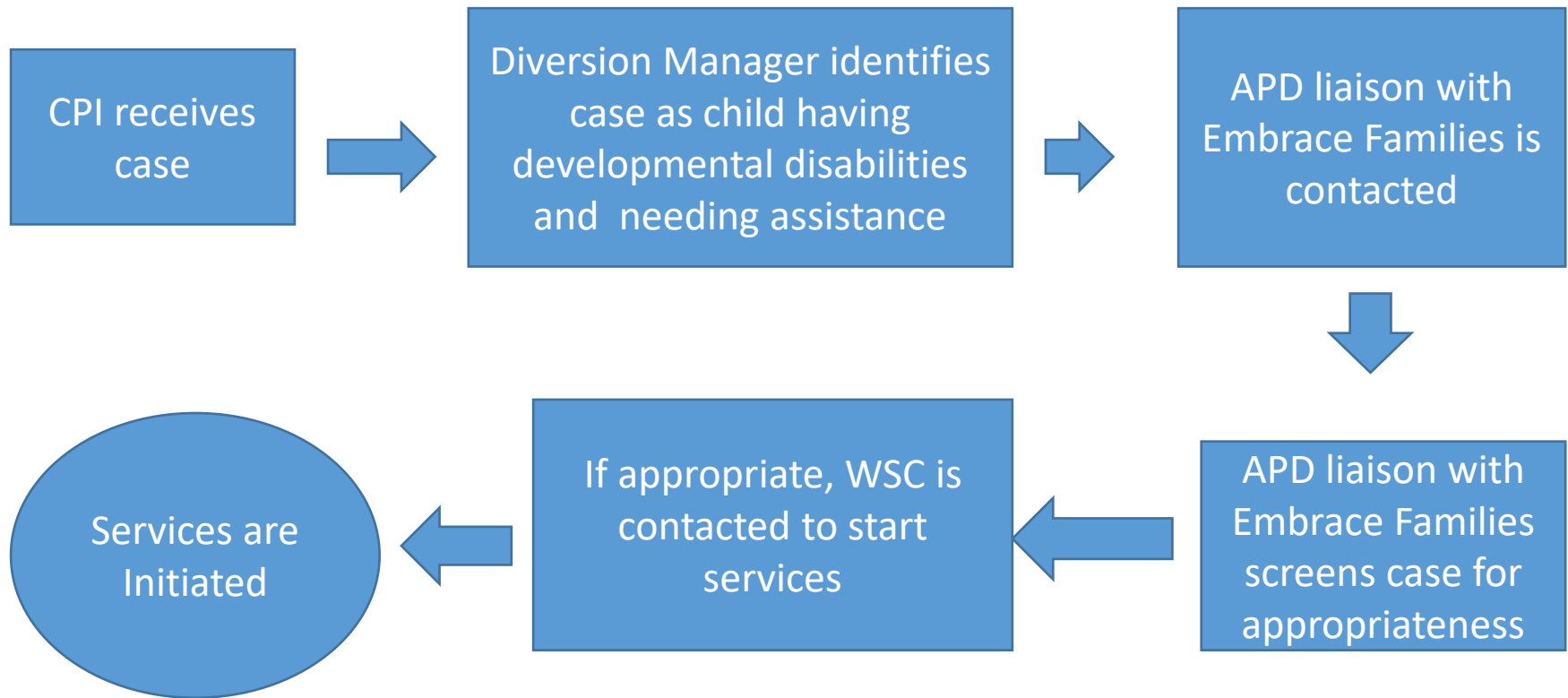


# Embrace Families Contract with WSC

- A trend started appearing that children with developmental disabilities were coming into Foster Care due to families needing assistance.
- The families were being served through our Diversion Program.
- Need for an expert in the field!
  - Contract was developed
- Looking at Community Resources using Medicaid and the School System to help support these families.
- Help families navigate through the APD process
- Help families navigate the school system process



# How Embrace Families Involves the WSC



# Serving Diversion Families

- Assisted with APD application, ensuring all documents were sent
- Assisted families in effectively communicating their crisis to APD
- Assisted families with the APD residential referral process
- Coordinated Medicaid and Private Insurance Services
- Assisted in IEP development and transition services
- Coordinated other natural support services

# Services on iBudget

- Personal Supports and Respite
- Supplies and Equipment
- Life Skills and Meaningful Day
- Therapeutic and Wellness
  - ABA
  - Speech
  - PT/OT
  - Nursing Counseling
- Residential services
- Support Coordination





# Children's Services and Agencies

## WAIVER

- Respite
- Residential services
- Support Coordination

## MEDICAID

- Personal Supports
- Supplies and Equipment
- Therapeutic and Wellness
  - ABA
  - Speech
  - PT/OT
  - Nursing Counseling

## SCHOOL

- Life Skills and Meaningful Day

# Serving Diversion Families

- Explore the real needs of the entire family
- Complete an entire picture of family life and daily routine
- Explore all state, federal, and community resources to meet the family's needs
- Anticipate emerging needs



# Serving Diversion Families

- Family 1 CMS and Personal Care Needs
- Family 2 ABA Therapy
- Family 3 Residential Placement



# Data from Embrace Families

Fiscal Year 2018/2019

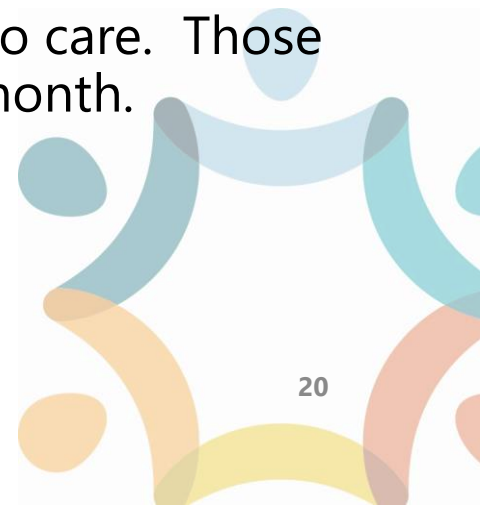
Total Paid to WSC: \$48,575.01

Families Served: 49

Cases Diverted from Care: 22

Estimated cost of Diverting Cases: \$85,680 month

There were 7 high end cases that threatened coming into care. Those cases alone saved Embrace Families \$63,000 a month.



# A Better Future for Our Families

- Politics Behind Existing System
- Impact of Waiver Going Away
- APD's Role in Supporting Families
  - Support Families with Children
  - Advocates to Help in Crisis Process
  - Training for Families
- Ultimate Outcomes will be Better for Children, Families and APD