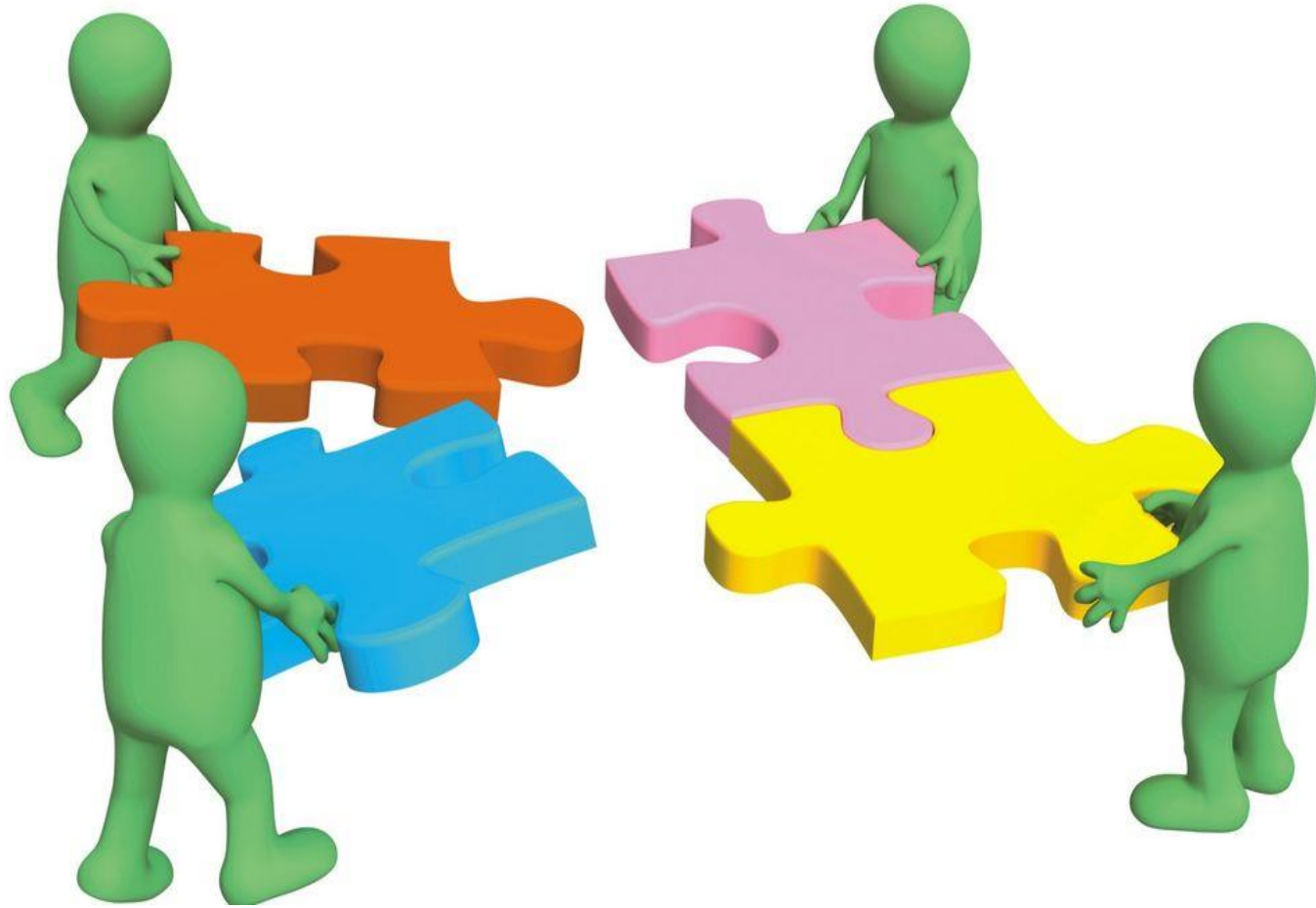




# Early Childhood Court Recidivism Protocols

Child Protection Summit, 2020



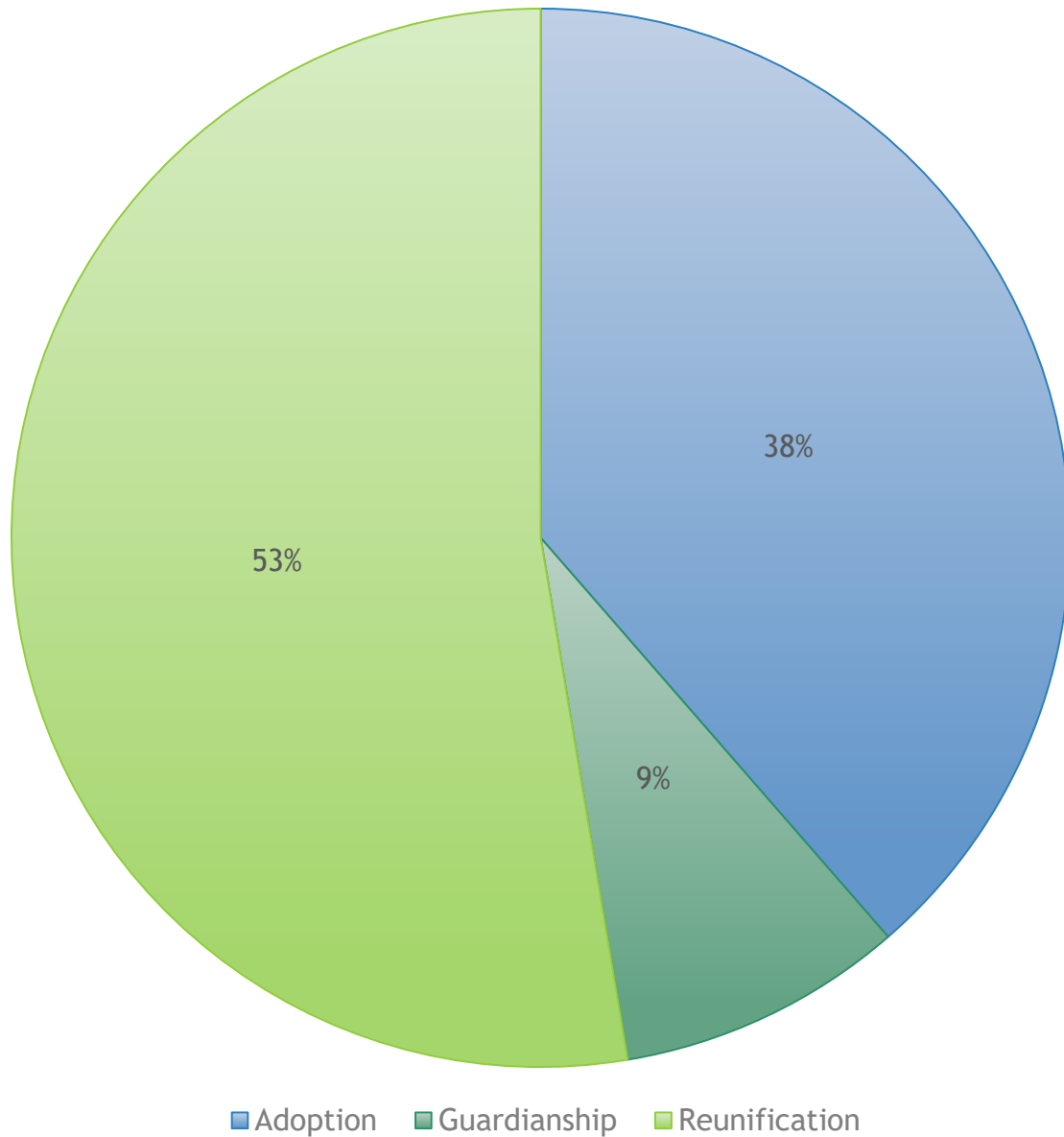
# ECC Best Practice Standards



# Five Key Principles

1. Create a multidisciplinary team connected with an engaged, informed Judge
2. Be trauma informed
3. Be developmentally informed
4. Be systems oriented
5. Use evidence-based interventions for families

## ECC Closures in 2019



5.3%  
Recidivism Rate

# Development



## Goal 1

*To provide a mechanism for systematic review of Early Childhood Court re-removals.*

*“Reducing re-removals and achieving sustained permanent placements for all of our children.”*

## Goal 2

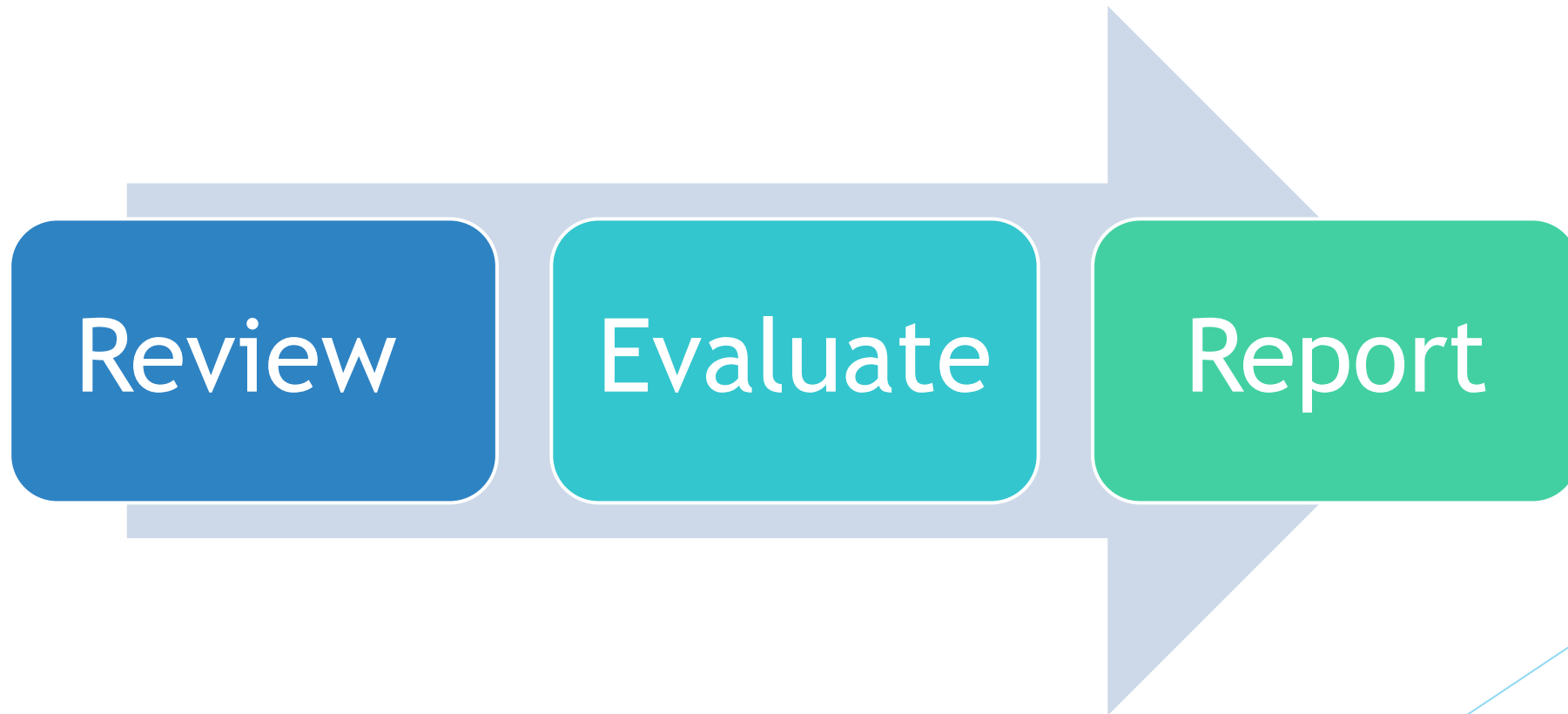
*To evaluate adherence to the  
established  
Early Childhood Court approach  
defined in the  
Florida Early Childhood Court  
Best Practice Standards*



## Goal 3

*To aid in identifying the case characteristics that correlate to high risk of child re-removal*

# Process



# Appendices



Materials



Background



Outcomes



ACEs

# Appendices



Attachment  
& Trauma



Savings



Intimate  
Partner  
Violence



Substance  
Use  
Disorder &  
Mental  
Health

# Appendices



PITA



Conditions  
for Return



References



FDCIS

Florida State Courts



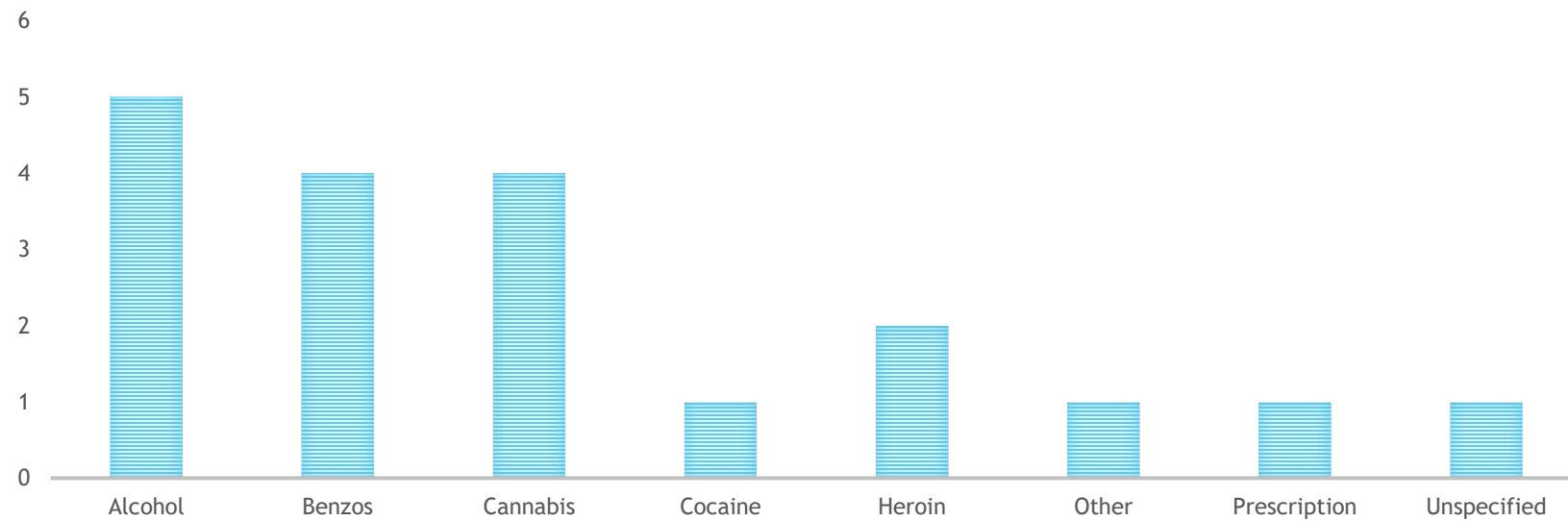
FLORIDA  
DEPENDENCY  
COURT  
INFORMATION  
SYSTEM



# Data Collection

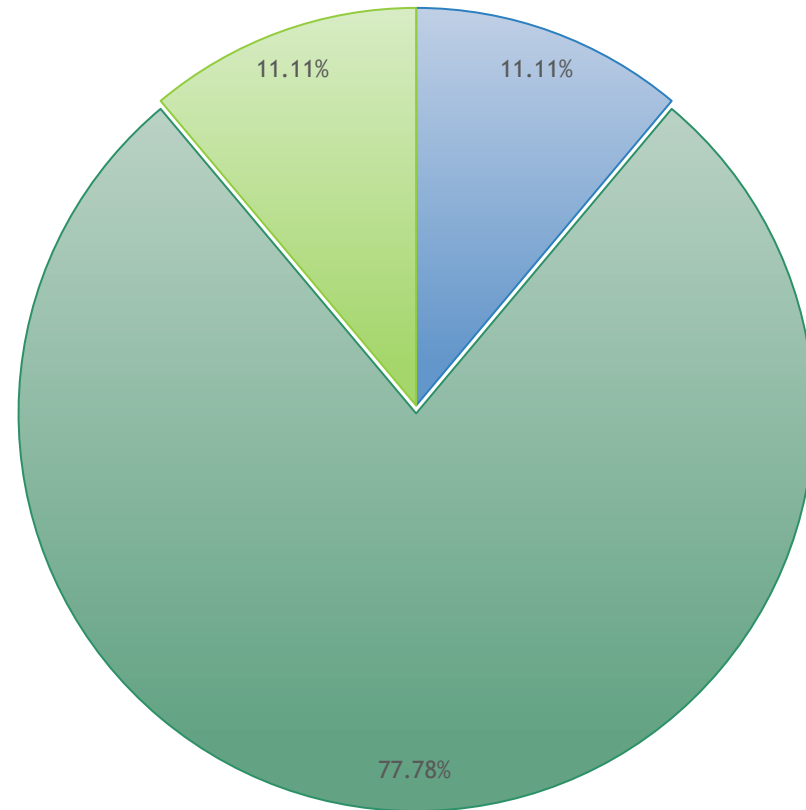
# ECC Data

## 2018 PARENT'S TYPE OF SUBSTANCE USED



# ECC Data

2019 re-removal race



■ Multirace ■ White ■ Black





# Future

ECC Manual

[www.flcourts.org](http://www.flcourts.org)

CQI

Traditional Dependency Cases

